



# STONE<sup>wiz</sup><sup>®</sup>

Architectural Cladding. Elegant Living

Manufactured Architectural Stone Cladding

## ROCKY MOUNTAIN LEDGE

✉ [contactus@stonewiz.in](mailto:contactus@stonewiz.in)

🌐 [www.stonewiz.in](http://www.stonewiz.in)



# ROCKY MOUNTAIN LEDGE



MISTY GREY



RUSTIC WHITE



TUNDRA WHITE



ARCTIC WHITE



HIGHLAND CREAM



COASTAL CREAM



CHAMPAGNE



BLACK PEARL





**BLACK RIVER**

ROCKY MOUNTAIN LEDGE DESIGN IS A POPULAR CHOICE AMONG ARCHITECTS AND HOMEOWNERS FOR STONE CLADDING AS IT IS KNOWN FOR ITS RUGGED AND NATURAL APPEARANCE. IT ADDS A TOUCH OF ELEGANCE AND CHARACTER TO BUILDINGS, WHILE ALSO PROVIDING DURABILITY AND LOW MAINTENANCE.

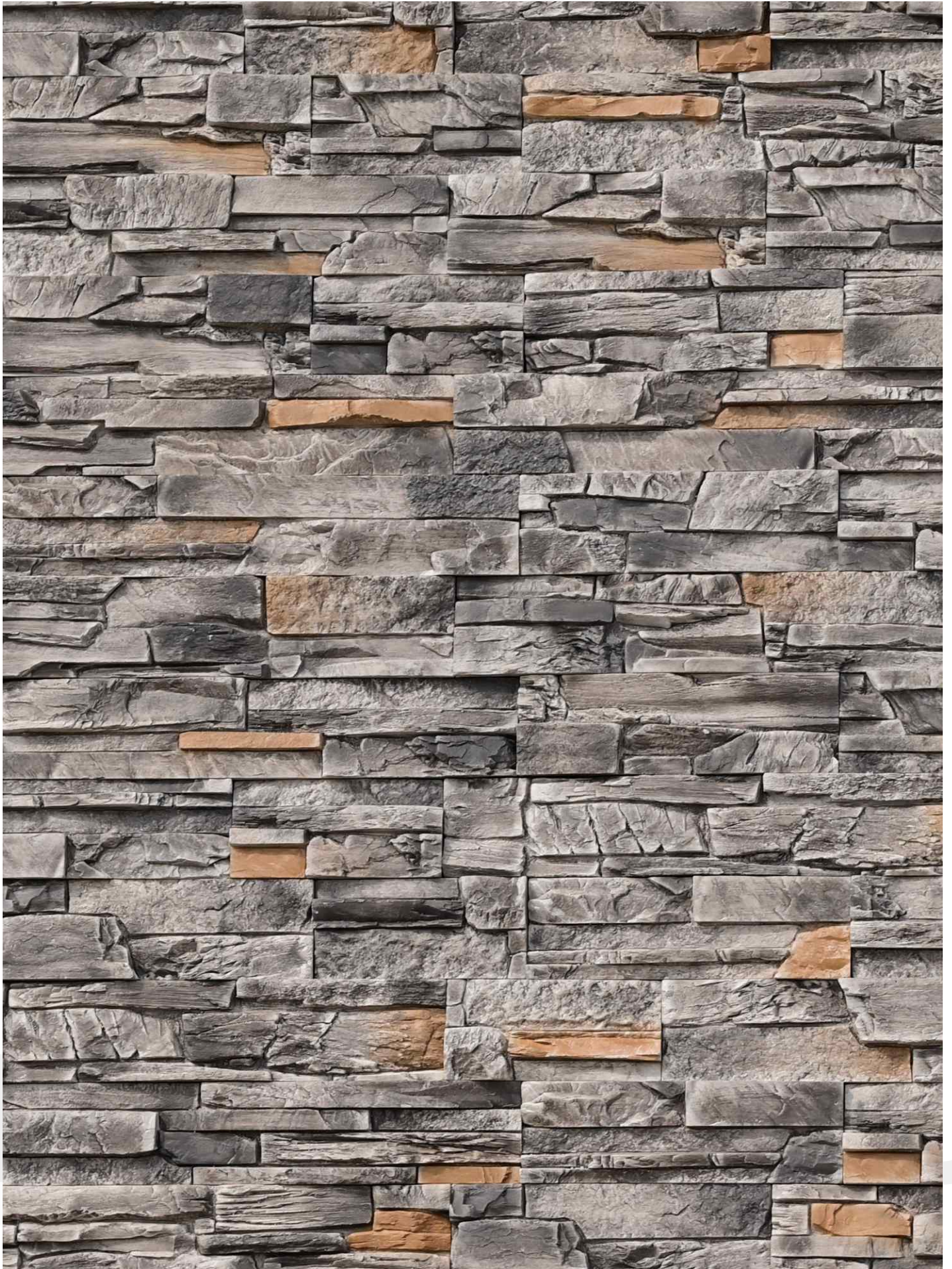
ROCKY MOUNTAIN LEDGE IS AVAILABLE IN VARIOUS COLORS, RANGING FROM EARTH TONES LIKE BROWNS, TANS, AND GRAYS TO MORE STRIKING OPTIONS LIKE BLACKS AND WHITES.

HAVING A DIVERSE COLOR PALETTE ENABLES DESIGNERS TO CREATE DIFFERENT MOODS, MATCH EXISTING ARCHITECTURAL ELEMENTS, OR ACHIEVE SPECIFIC DESIGN GOALS. WHETHER YOU'RE AIMING FOR A RUSTIC, NATURAL LOOK OR A MODERN AND BOLD AESTHETIC, THERE ARE COLOR OPTIONS AVAILABLE WITHIN THE ROCKY MOUNTAIN LEDGE DESIGN THAT CAN HELP BRING YOUR VISION TO LIFE.



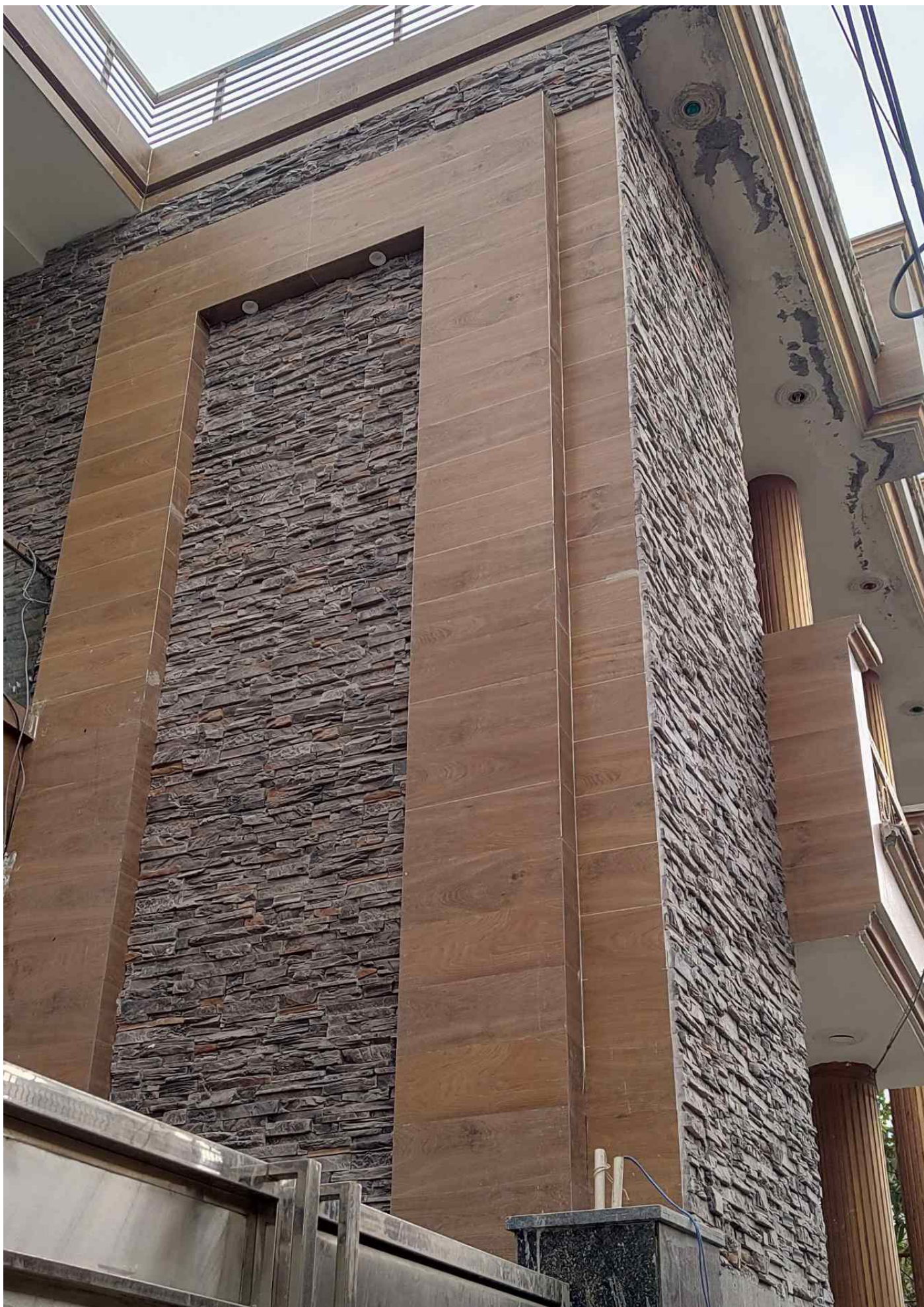
**ROCKY MOUNTAIN LEDGE-MISTY GREY**





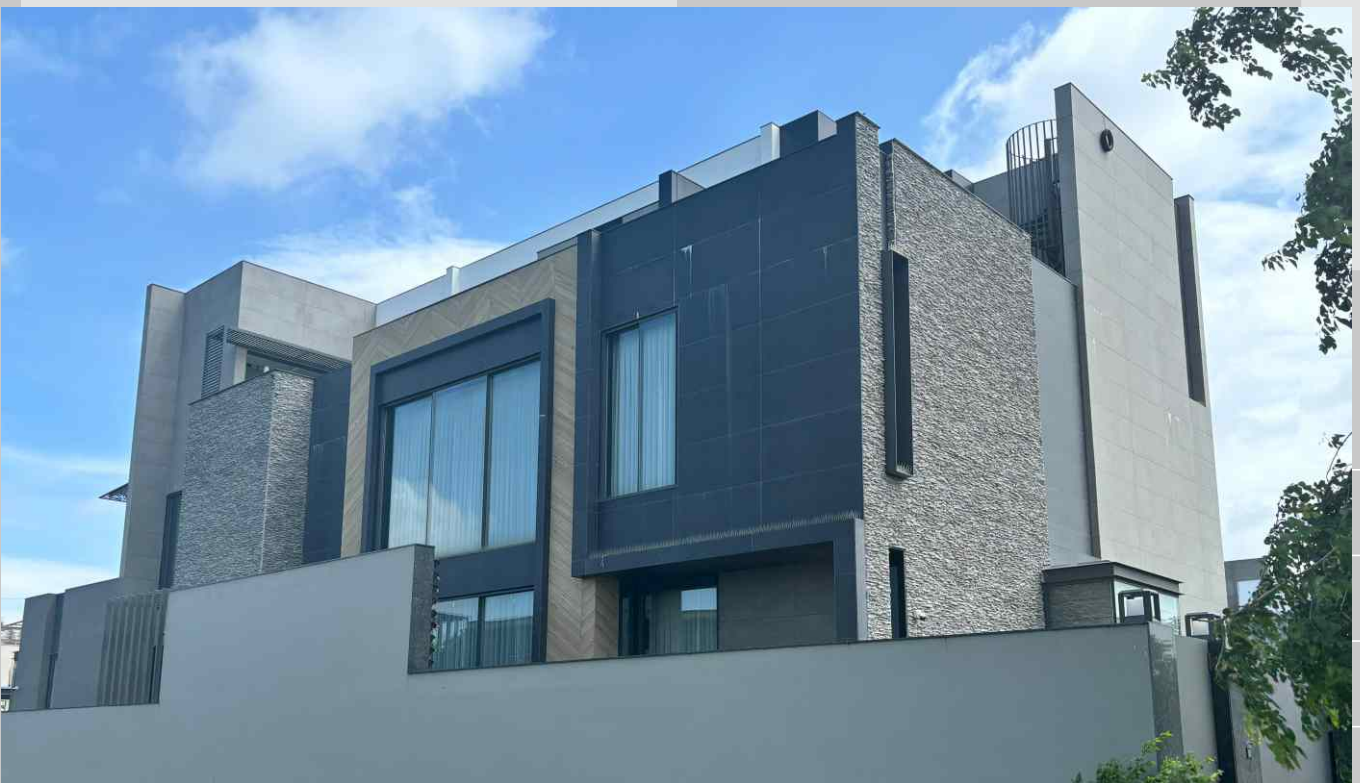
ROCKY MOUNTAIN LEDGE-MISTY GREY





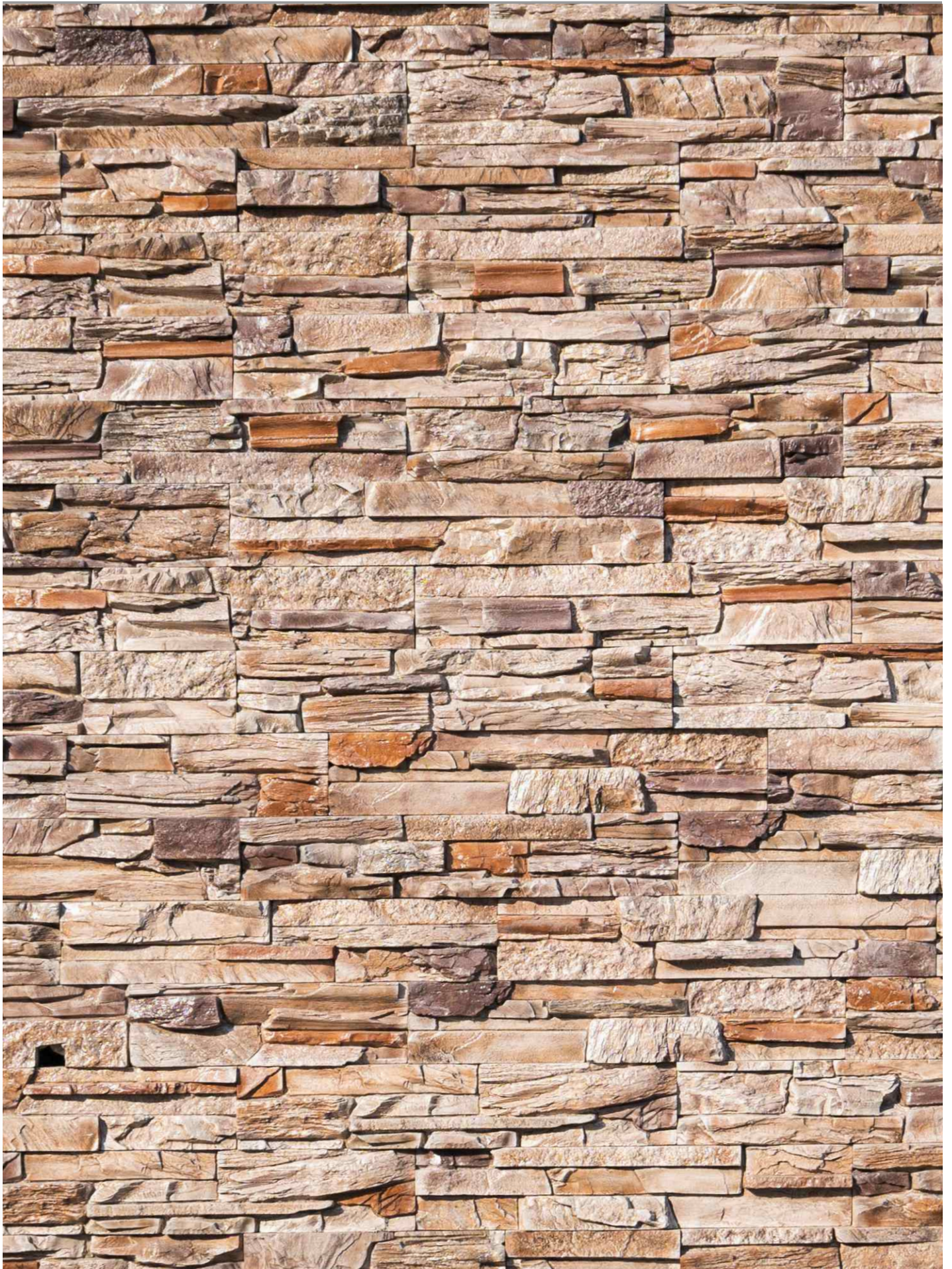
ROCKY MOUNTAIN LEDGE-MISTY GREY





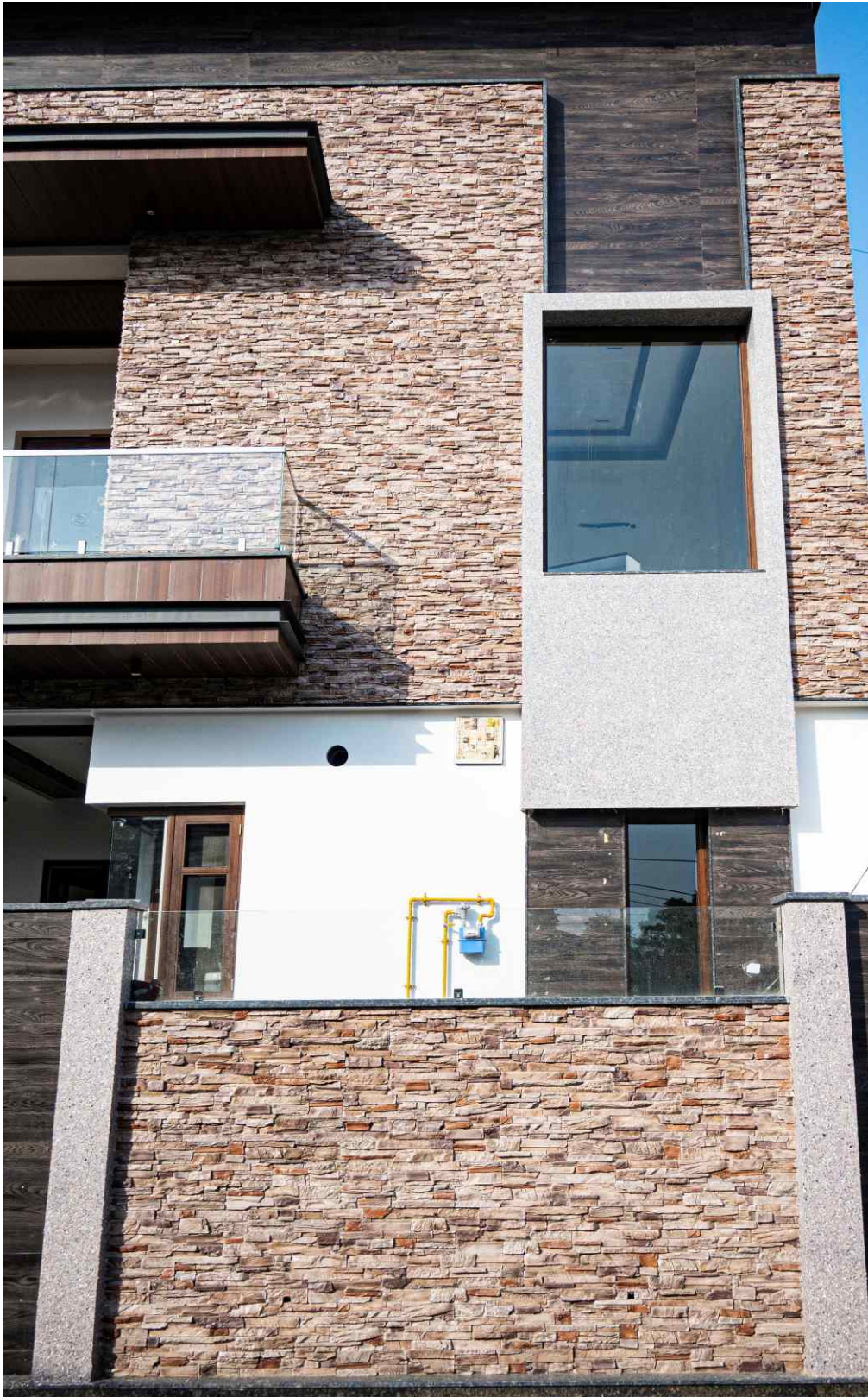
ROCKY MOUNTAIN LEDGE-MISTY GREY





ROCKY MOUNTAIN LEDGE-RUSTIC WHITE





ROCKY MOUNTAIN LEDGE-RUSTIC WHITE





+ + + +



ROCKY MOUNTAIN LEDGE-RUSTIC WHITE

+  
+  
+  
+



+

+

+

+



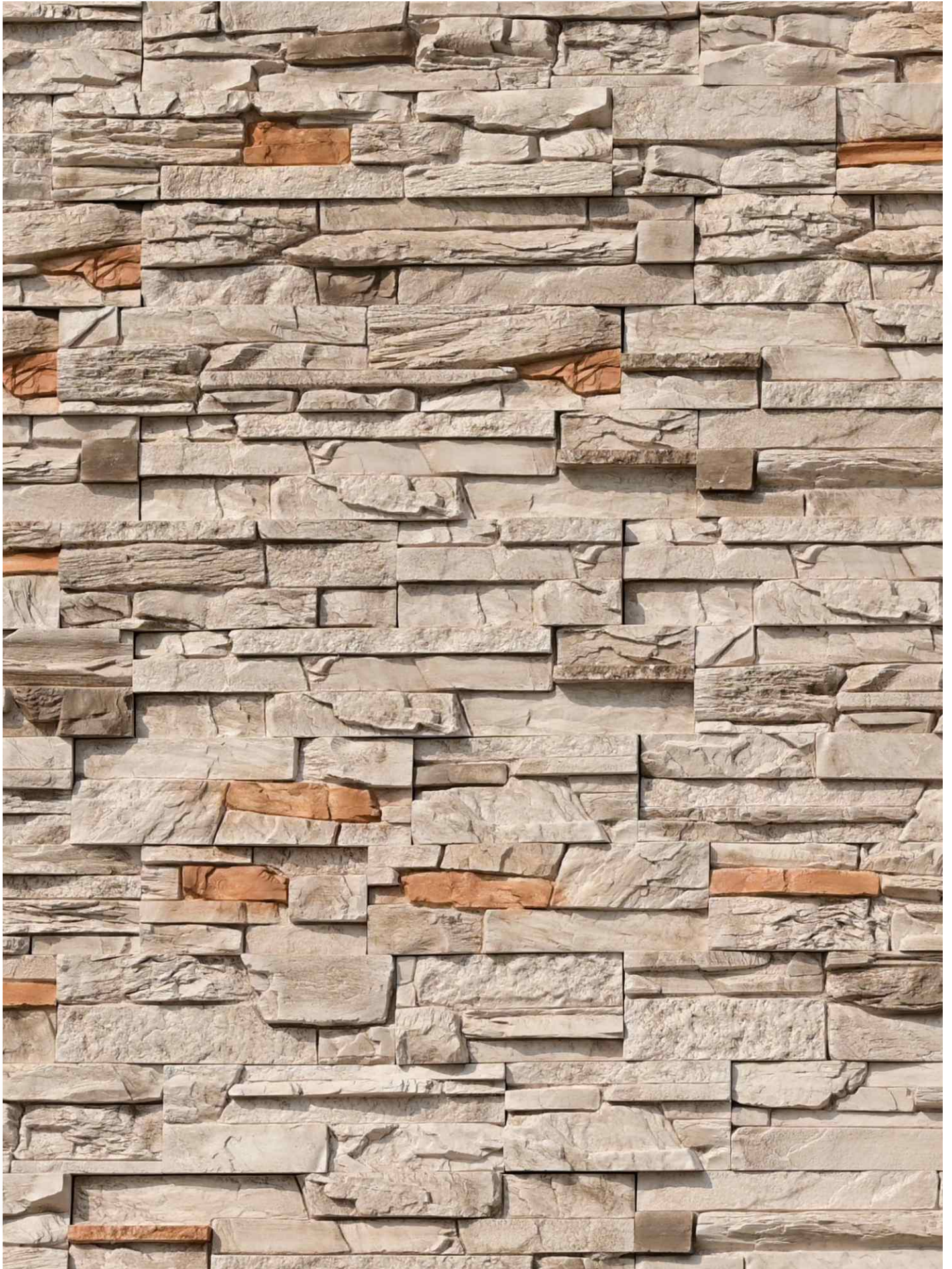
ROCKY MOUNTAIN LEDGE-RUSTIC WHITE

+

+

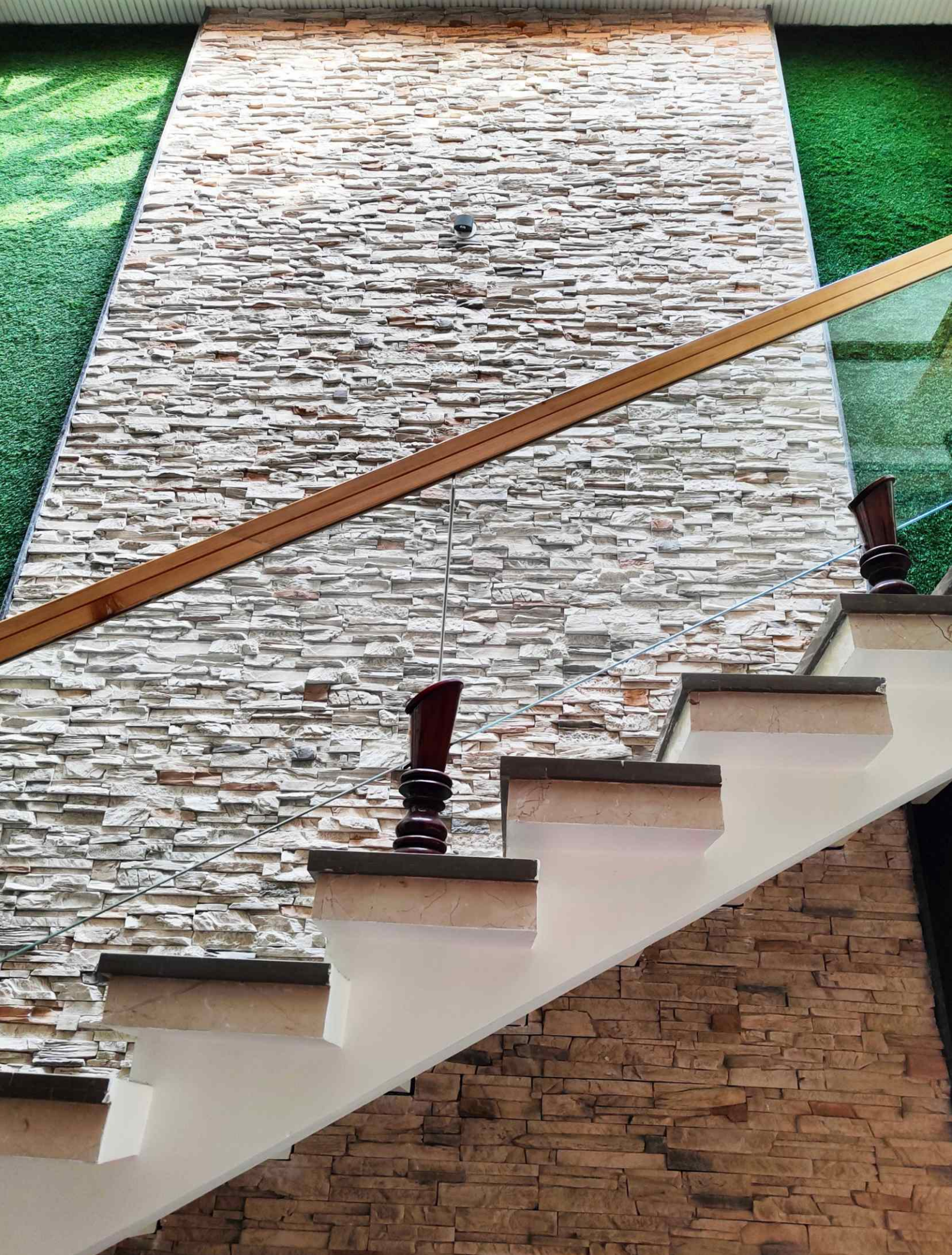
+





ROCKY MOUNTAIN LEDGE-TUNDRA WHITE

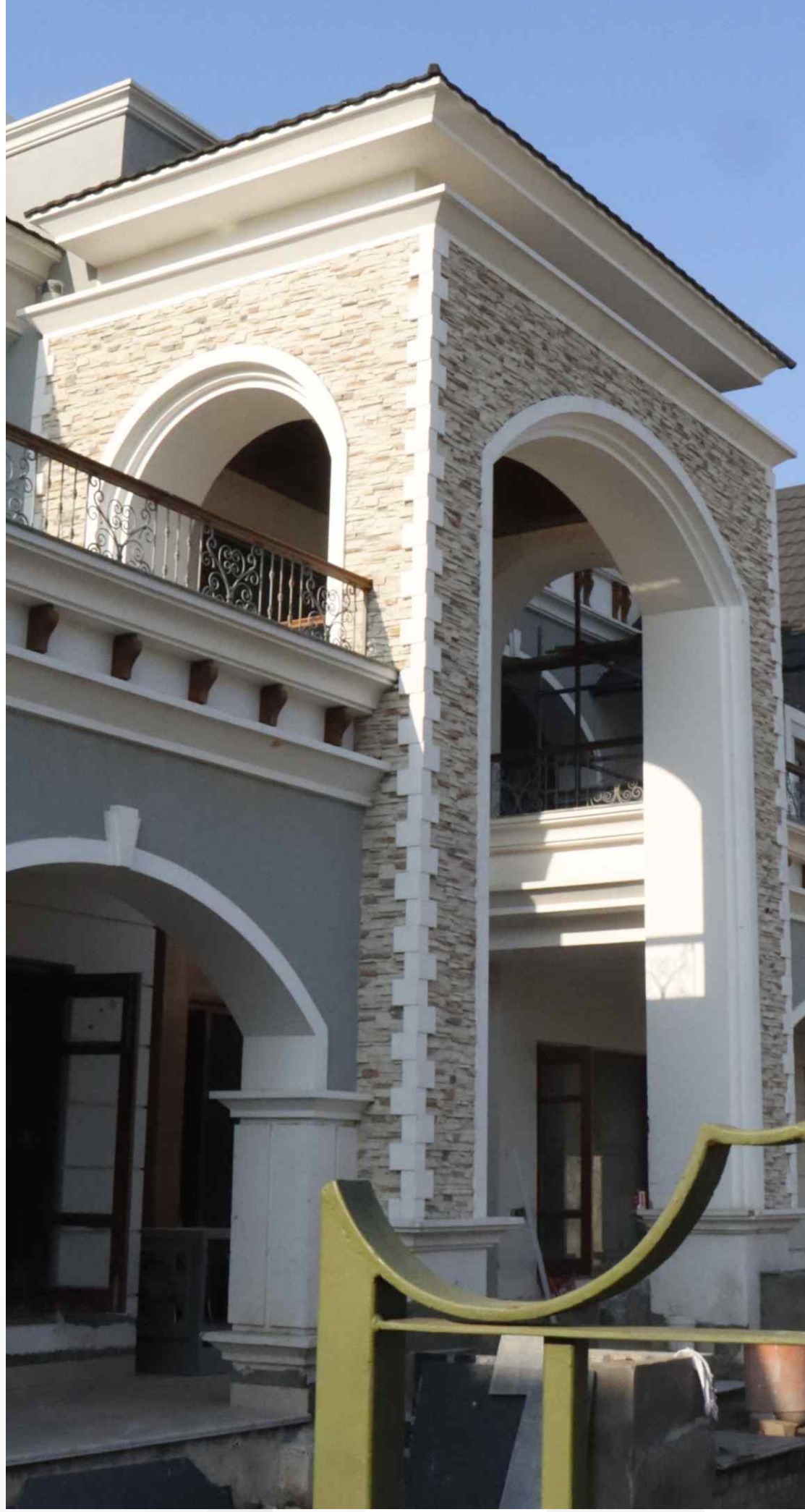




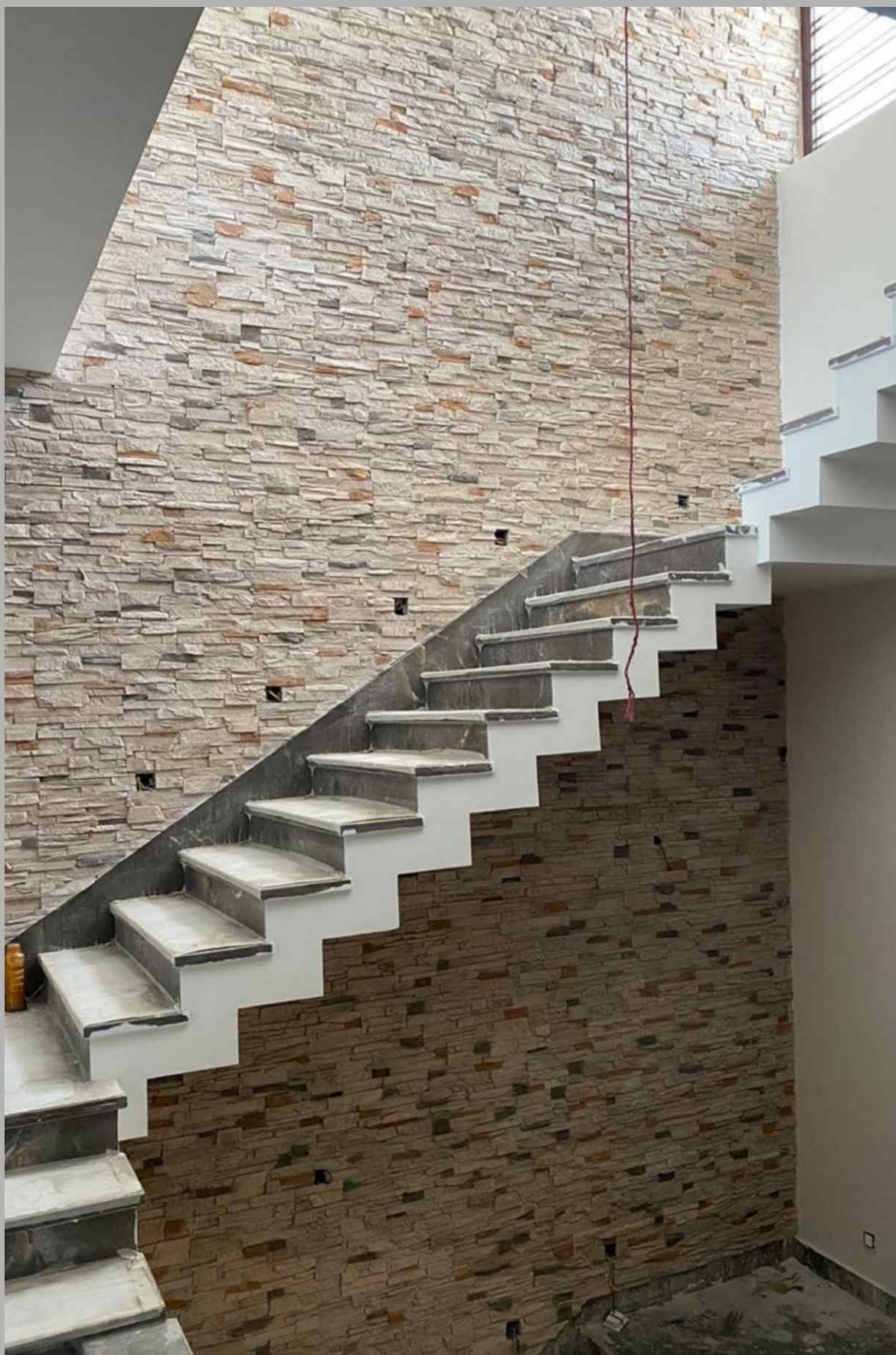
ROCKY MOUNTAIN LEDGE-TUNDRA WHITE



ROCKY MOUNTAIN LEDGE-TUNDRA WHITE







ROCKY MOUNTAIN LEDGE-TUNDRA WHITE





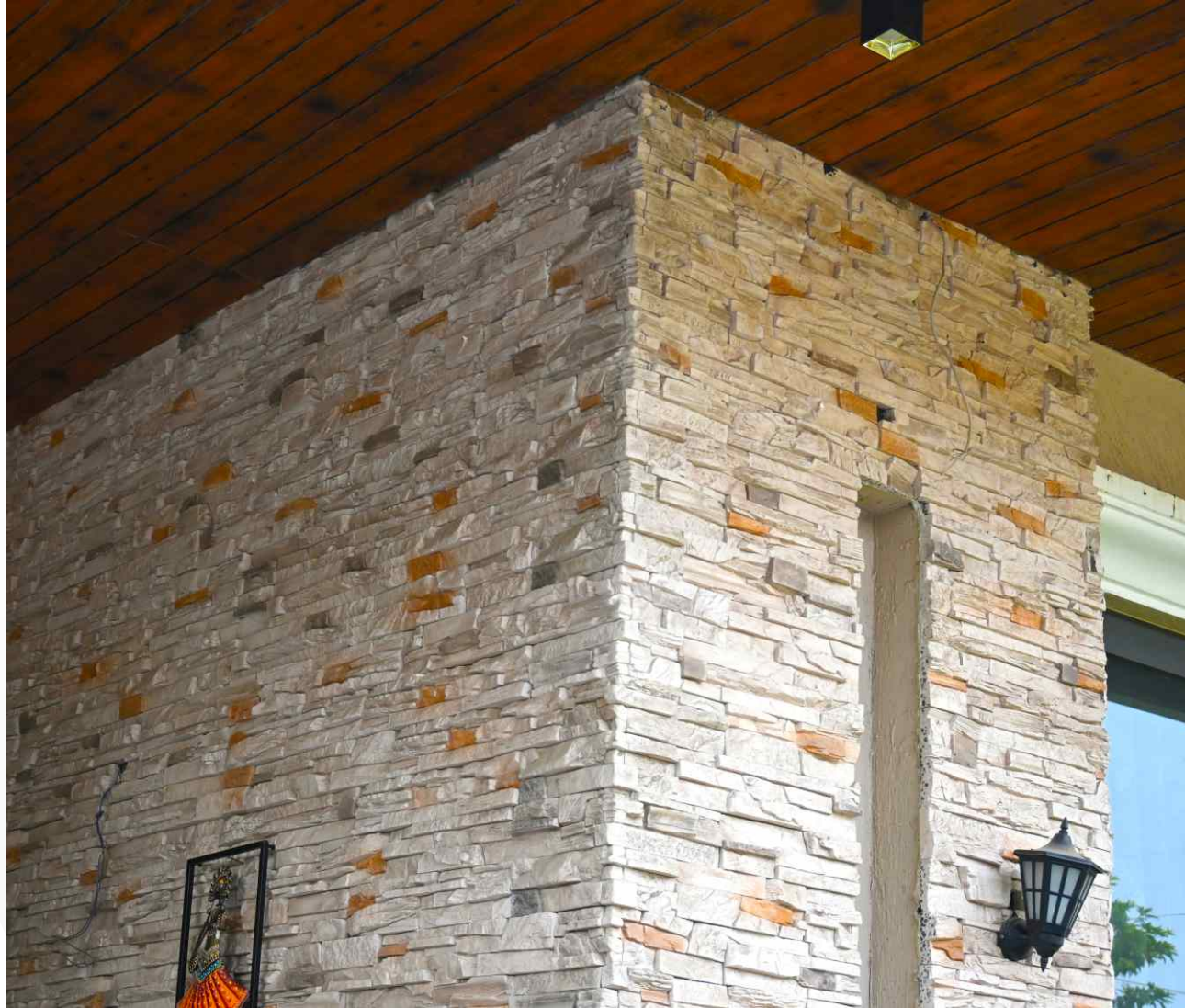
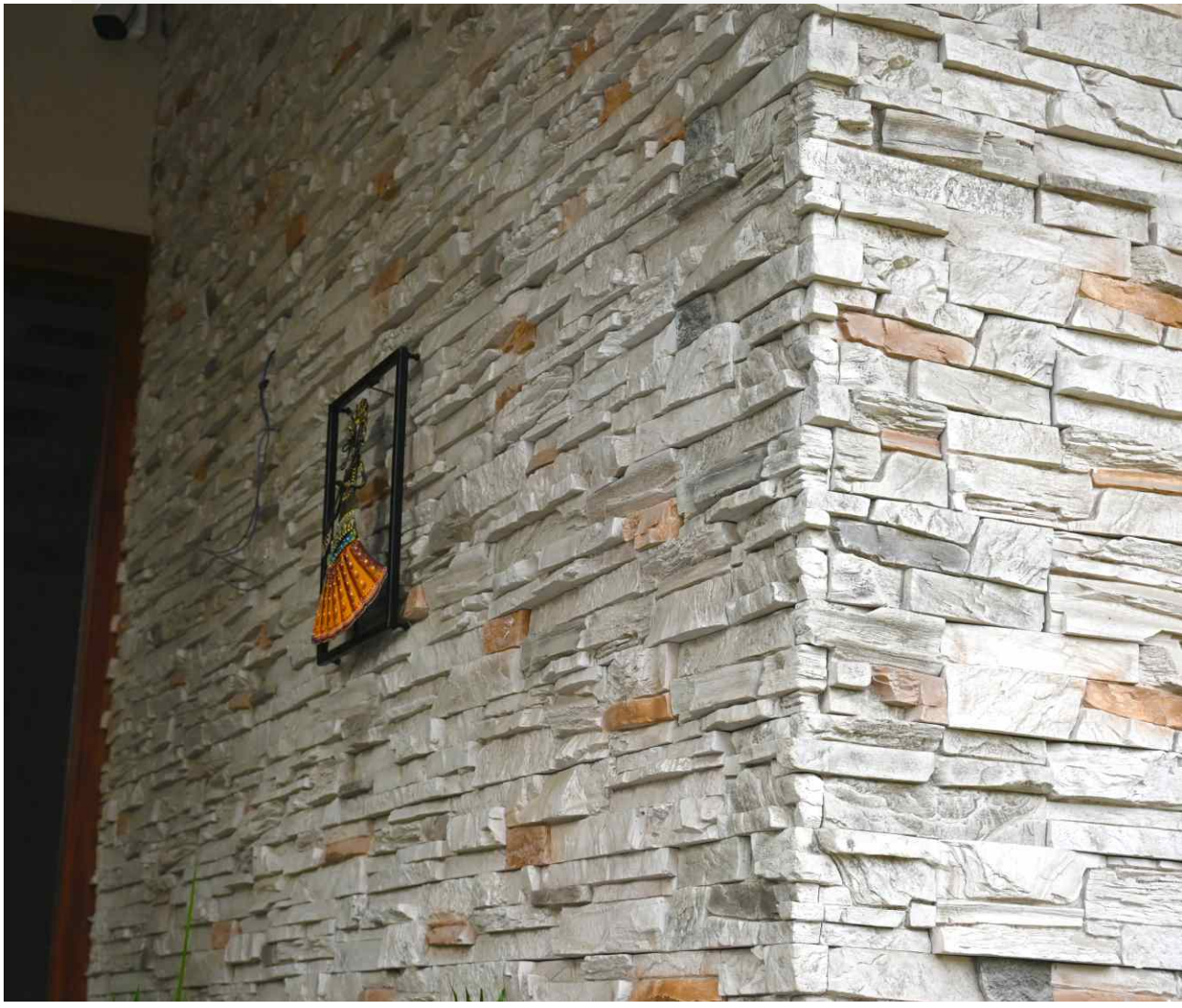
ROCKY MOUNTAIN LEDGE-ARCTIC WHITE



## ROCKY MOUNTAIN LEDGE-TUNDRA WHITE



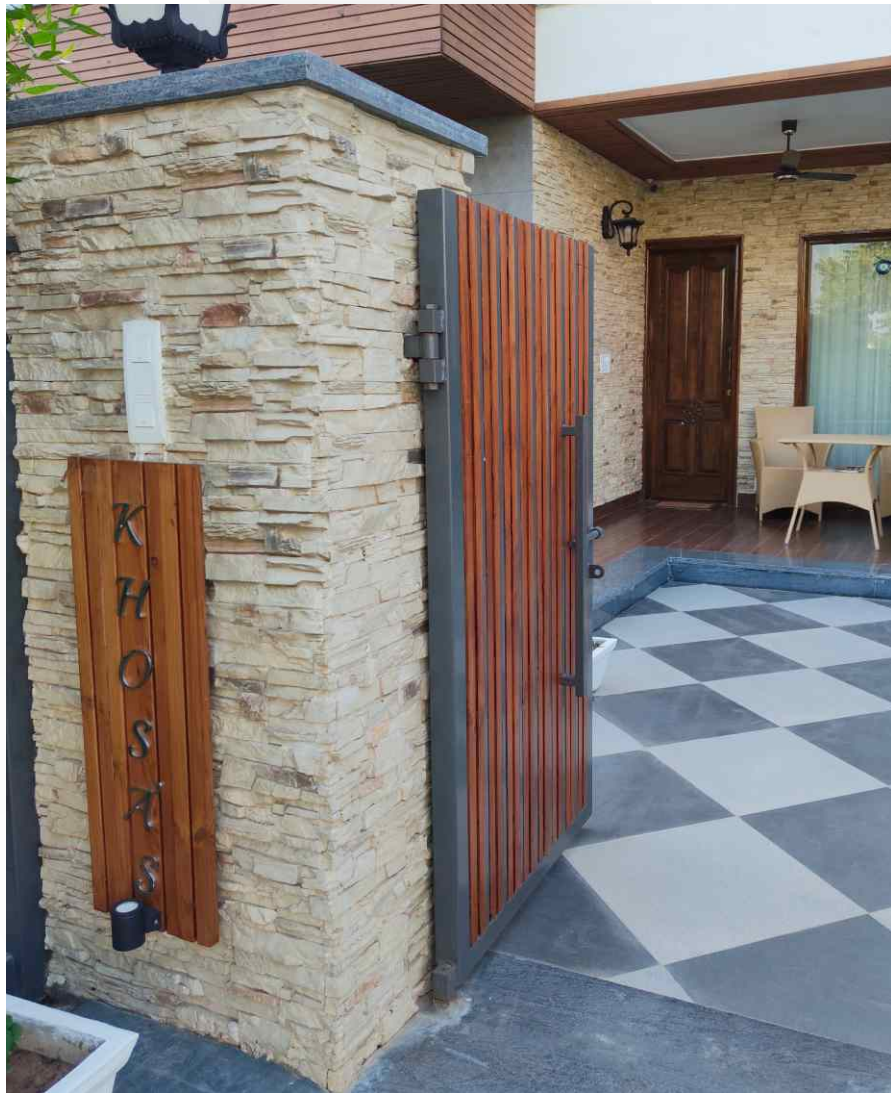




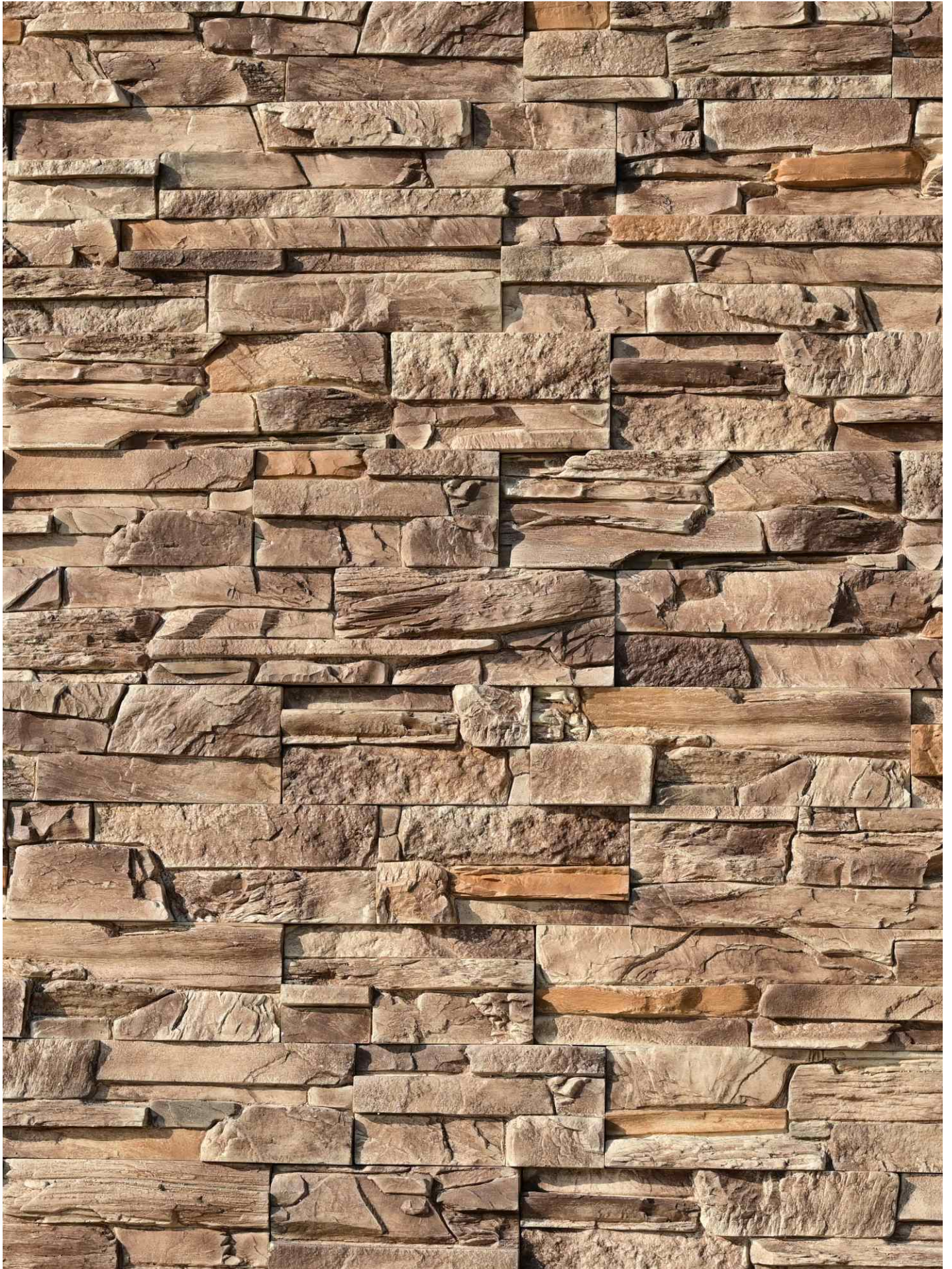
ROCKY MOUNTAIN LEDGE-TUNDRA WHITE



ROCKY MOUNTAIN LEDGE-ARCTIC WHITE







ROCKY MOUNTAIN LEDGE-HIGHLAND CREAM



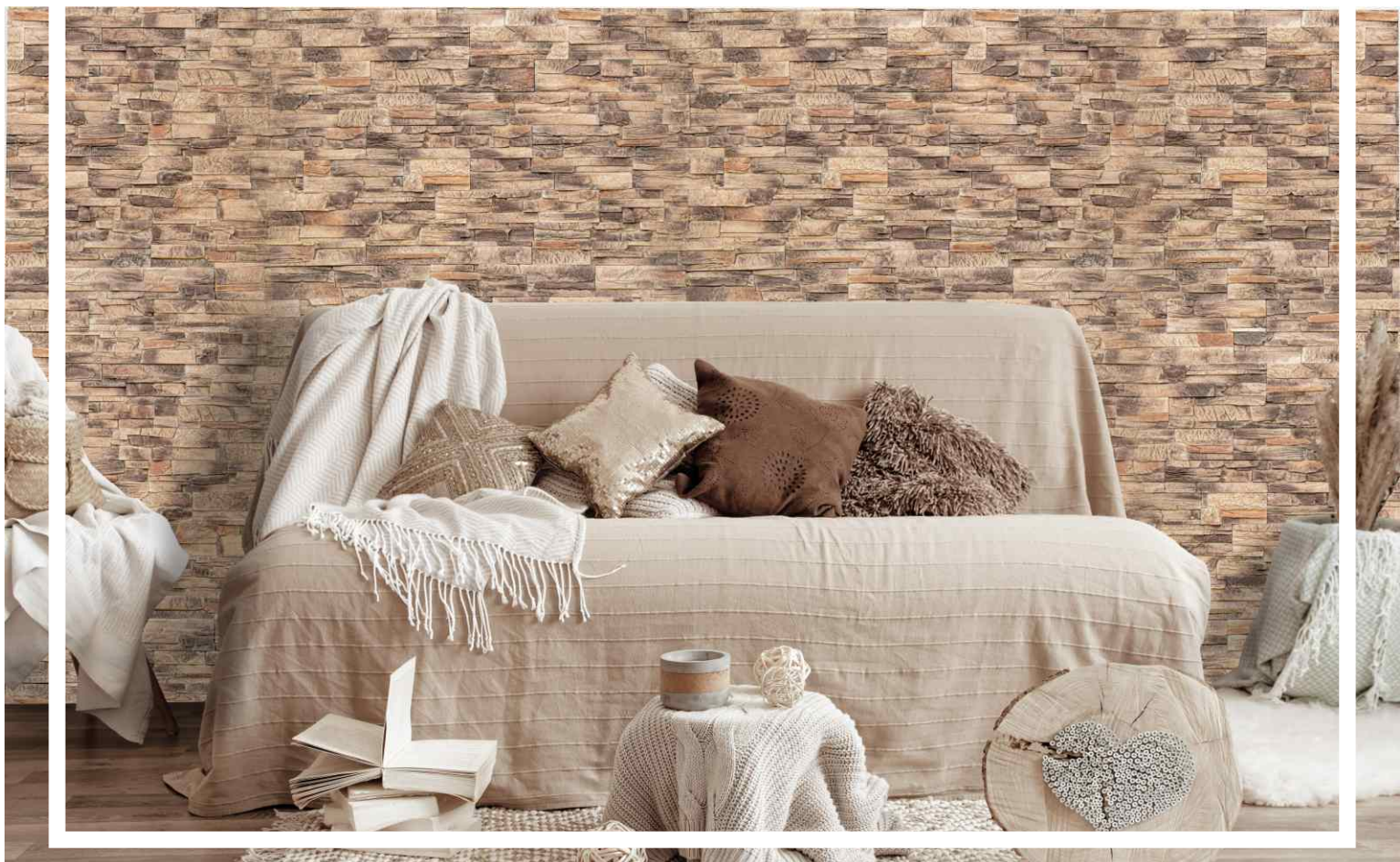


**ROCKY MOUNTAIN LEDGE-HIGHLAND CREAM**



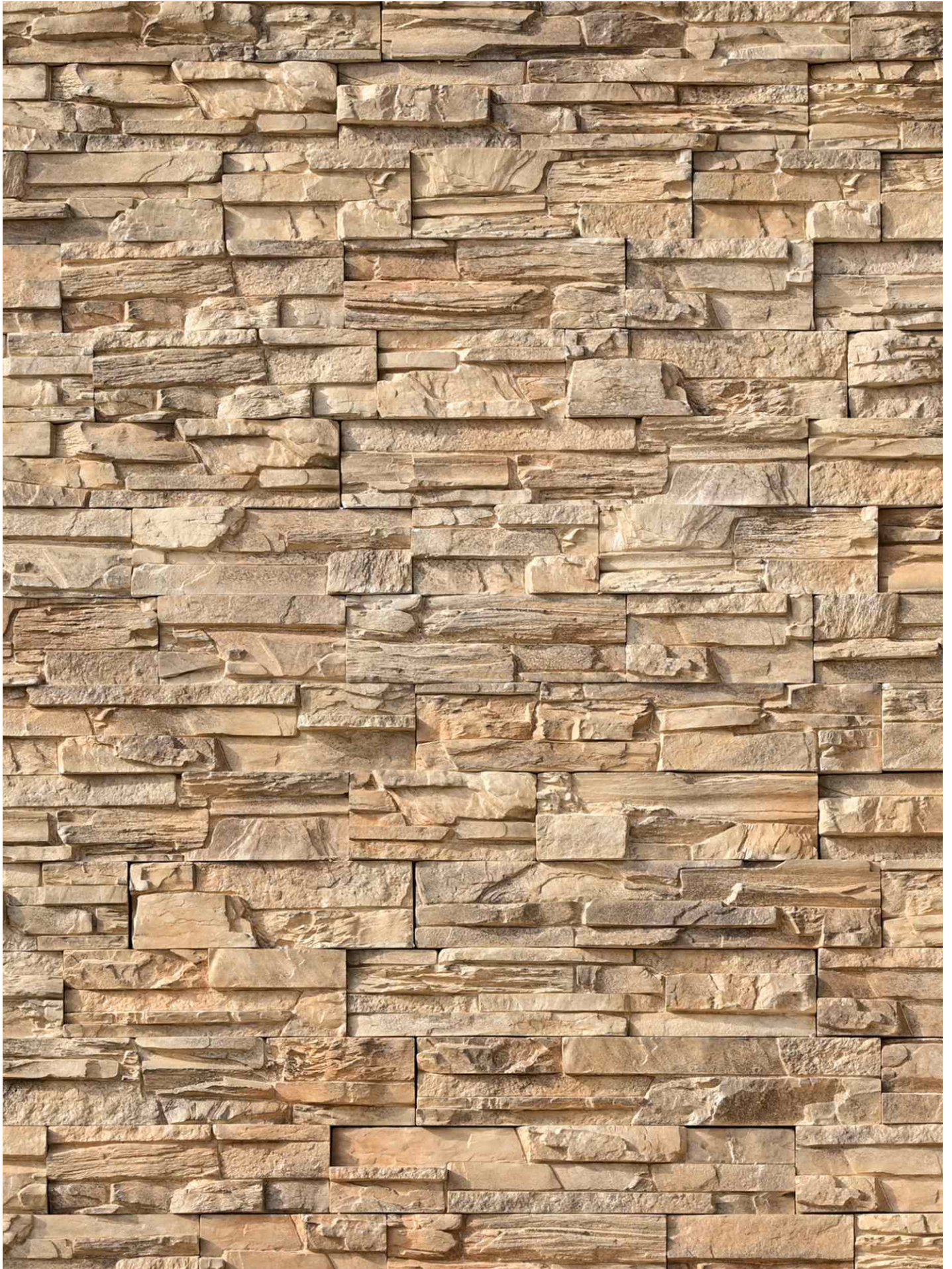


ROCKY MOUNTAIN LEDGE-HIGHLAND CREAM



ROCKY MOUNTAIN LEDGE-HIGHLAND CREAM





ROCKY MOUNTAIN LEDGE-COASTAL CREAM





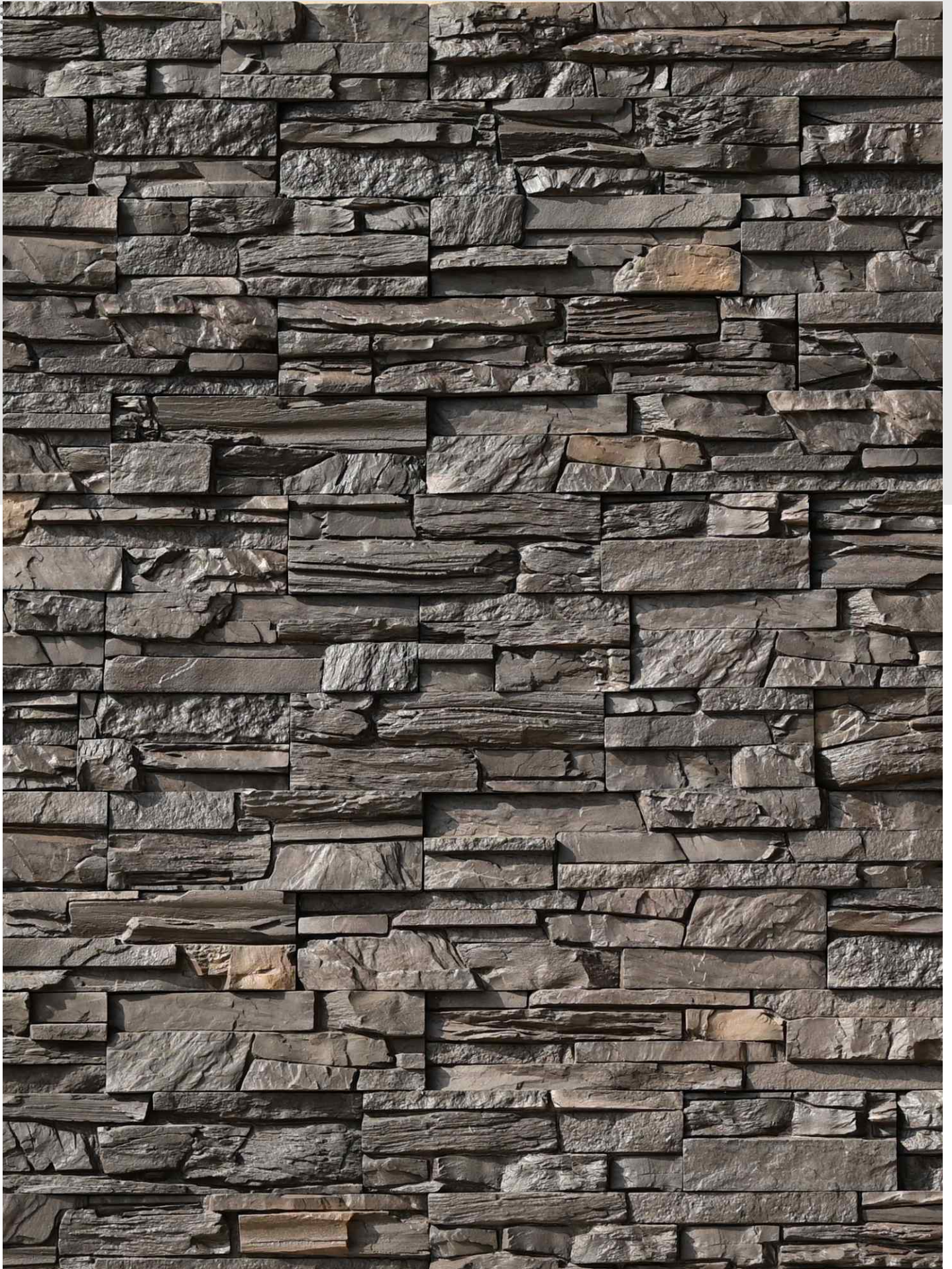
ROCKY MOUNTAIN LEDGE-COASTAL CREAM



ROCKY MOUNTAIN LEDGE-CHAMPAGNE

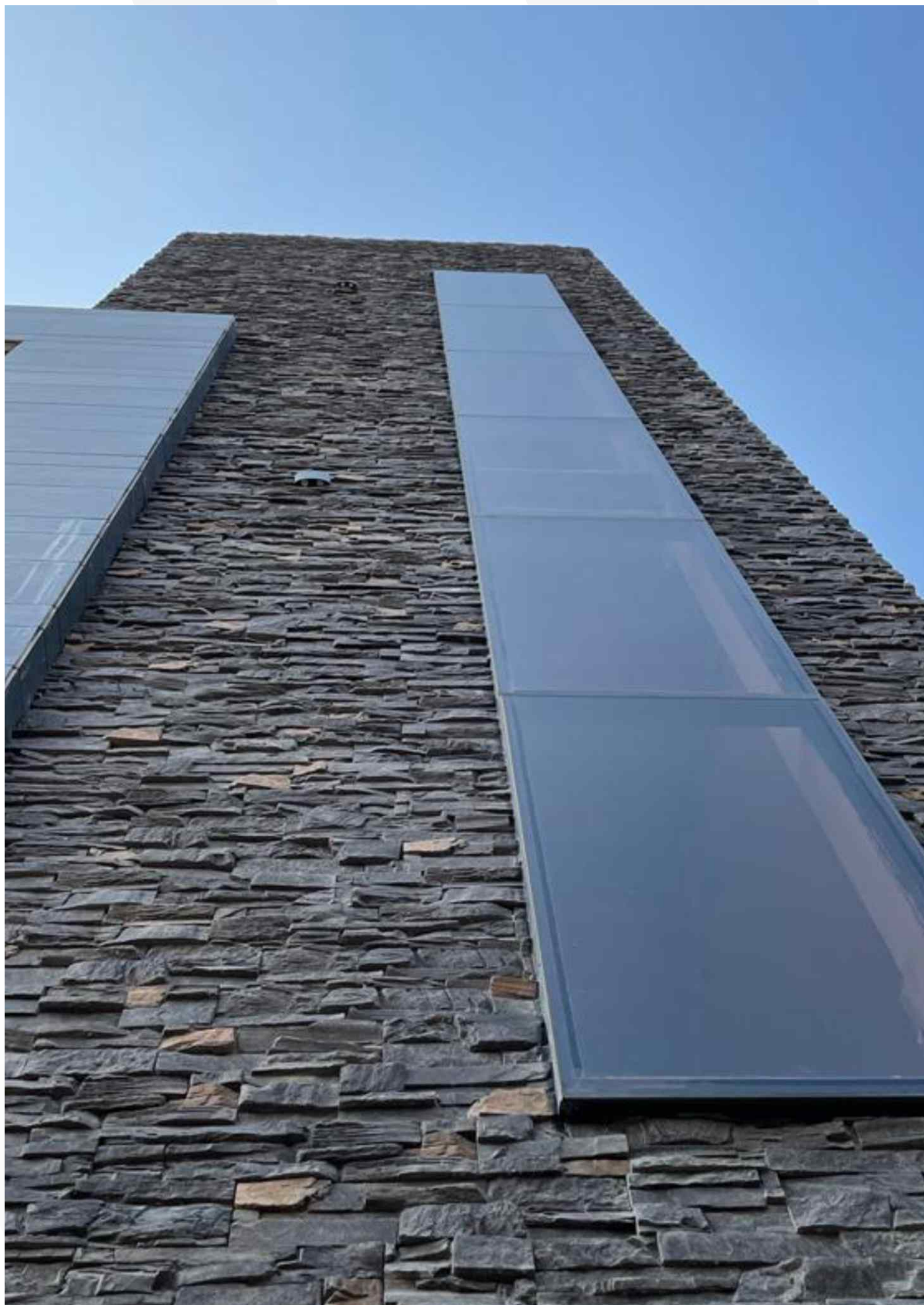






ROCKY MOUNTAION LEDGE-BLACK PEARL





ROCKY MOUNTAIN LEDGE-BLACK PEARL





ROCKY MOUNTAIN LEDGE-BLACK PEARL





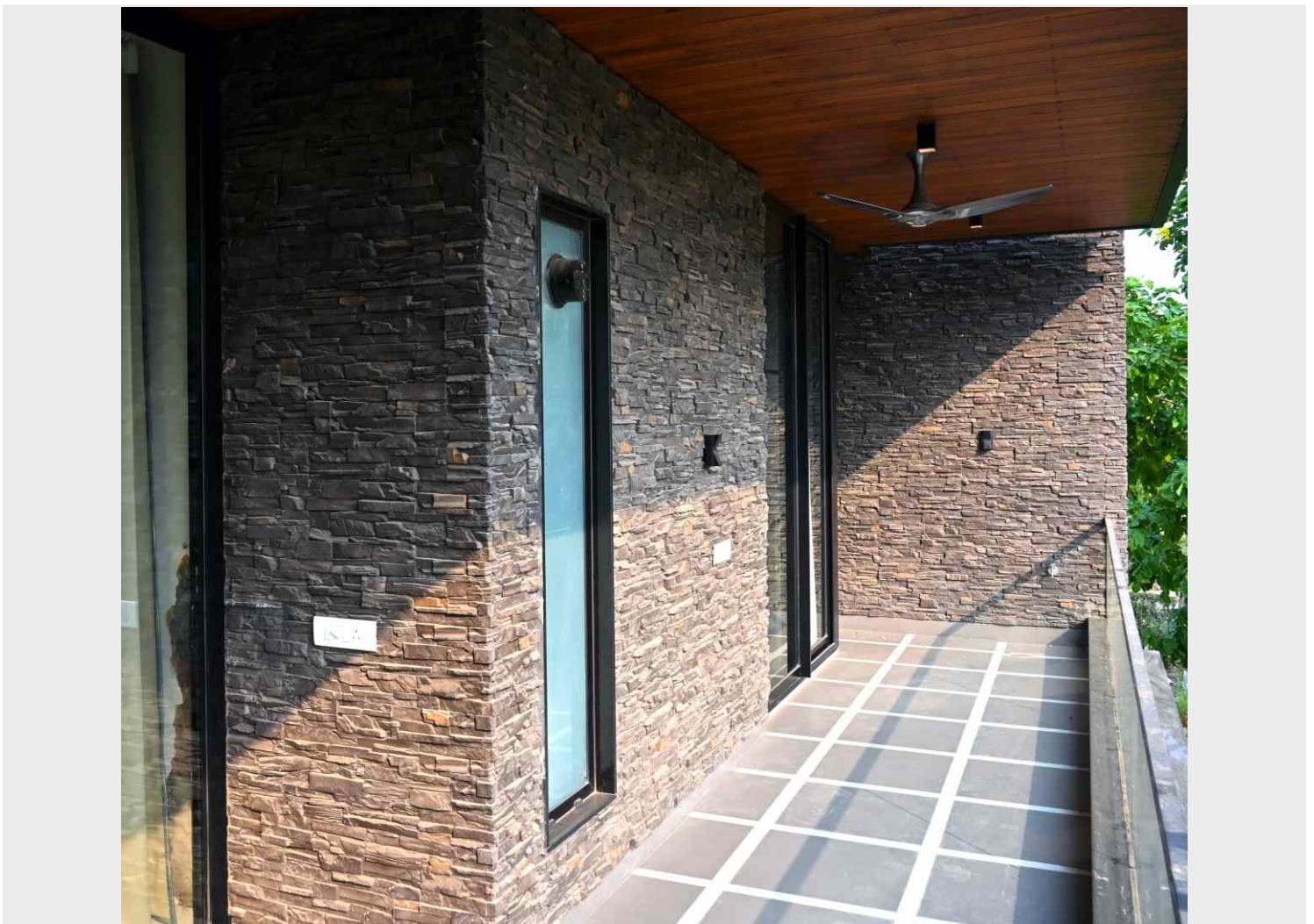
ROCKY MOUNTAIN LEDGE-BLACK PEARL







ROCKY MOUNTAIN LEDGE-BLACK PEARL

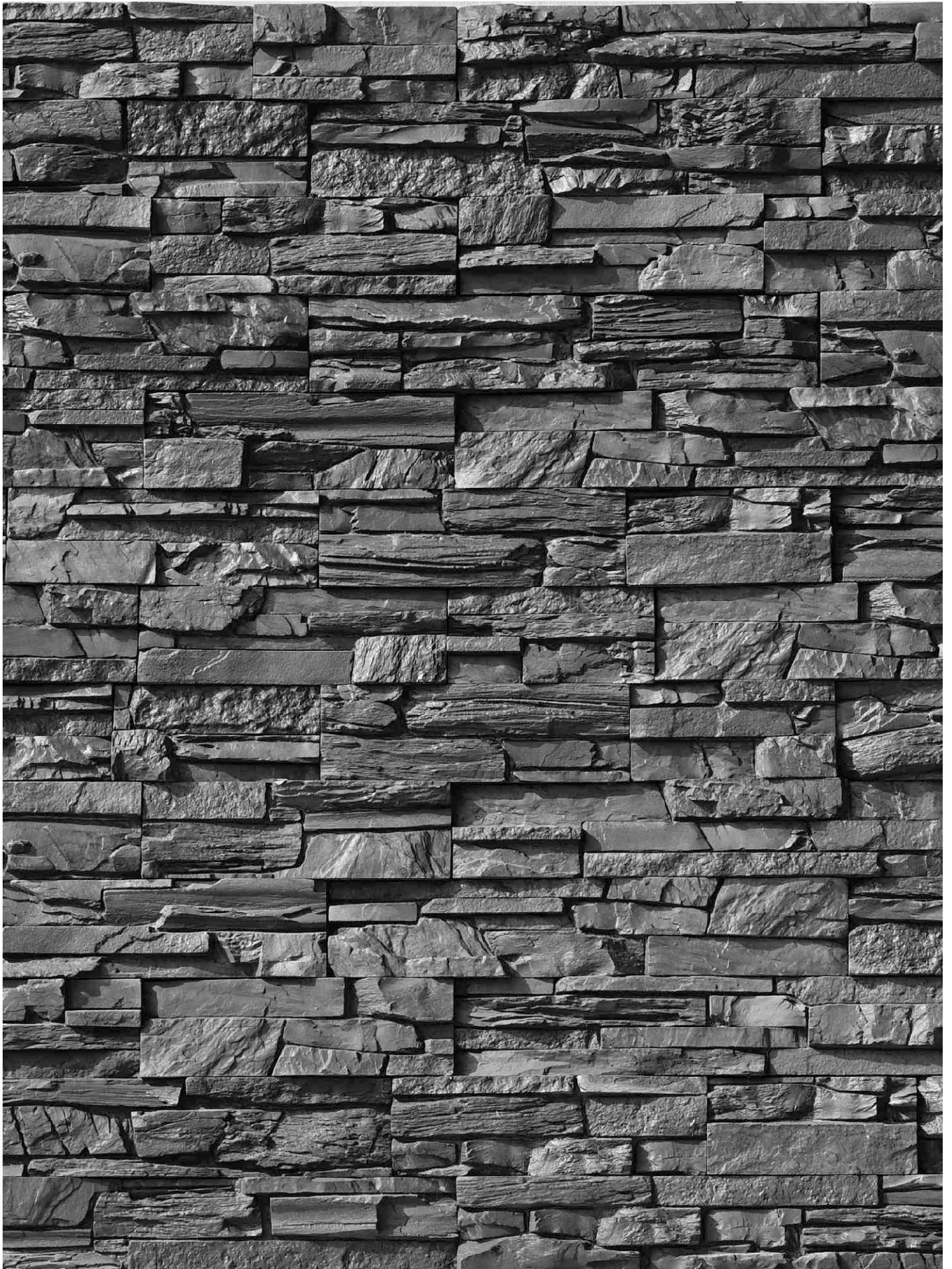






ROCKY MOUNTAIN LEDGE-BLACK PEARL




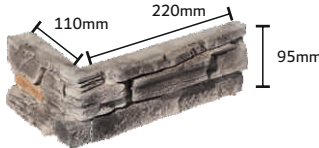
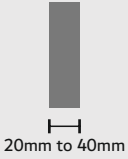


ROCKY MOUNTAIN LEDGE-BLACK RIVER





ROCKY MOUNTAIN LEDGE-BLACK RIVER

Flat Stone		Corner Stone		Thickness
 <p>Weight of stone: 4 kg per sq. ft (Approx.)</p>		 <p>Area covered per running feet= 1.08 sq. ft.</p>		 <p>20mm to 40mm</p>
Area Per Box (sq.ft.)	7.15	Area Per Box (rft.)	6.23	
Weight Per Box (kgs.)	30	Weight Per Box (kgs.)	36	